
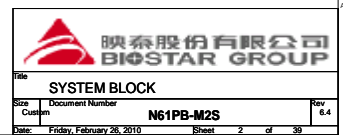


N61PB-M2S

VER:6.4

TITLE	SHEET
COVER SHEET	1
BLOCK DIAGRAM	2
RESET&CLK MAP	3
SPEC&CHANGE LIST	4
PROCESSOR M2 940	5,6,7,8,9
DDR ADD/CTL/VTT TERMINATI	10
DDR2 1	11
DDR2 2	12
NV CHIPSET(MCP61P)	13,14,15
	16,17,18,19
PCI 1&2	20
FRONT PANEL HEADER	21
PCI EXPRESS X16	22
IDE CONN	23
POWER CONN & FAN CONTROL	24
FLOOPY / KB / MOUSE / CMOS	25
VGA CONN	26
USB DEVICE	27
SERIAL & PARALLEL	28
AUDIO CODEC (ALC662)	29
AUDIO CONN	30
VCORE POWER SUPPLY	31
MEM_VREG/MEM_VTT	32
LPC SUPER IO ITE8716F	33
FLASH ROM & H/W MON	34
POWER SEQUENCING	35
LAN 10/100(RLT8201CL)	36
OVER VOLTAGE	37
MCP61 CORE	38
PAGE1	39
CHANGELIST	40

		映泰股份有限公司 BIOSSTAR GROUP	
Title COVER SHEET			
Size	Document Number		Rev
Cuspm	N61PB-M2S		6.4
Date	Friday, February 26, 2010	Sheet	1 of 39



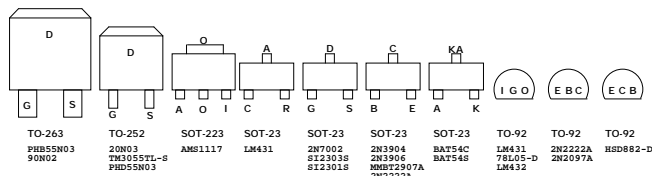
CPU VID TABLE			
VID [4..0]	VDD	VID [4..0]	VDD
0X0000	1.550V	0X1000	1.150V
0X0001	1.525V	0X1001	1.125V
0X0010	1.500V	0X1010	1.100V
0X0011	1.475V	0X1011	1.075V
0X0100	1.450V	0X1010	1.050V
0X0101	1.425V	0X1011	1.025V
0X0110	1.400V	0X1010	1.000V
0X0111	1.375V	0X1011	0.975V
0X0100	1.350V	0X1100	0.950V
0X0101	1.325V	0X1101	0.925V
0X0110	1.300V	0X1101	0.900V
0X0111	1.275V	0X1101	0.875V
0X0110	1.250V	0X1100	0.850V
0X0101	1.225V	0X1101	0.825V
0X0110	1.200V	0X1110	0.800V
0X0111	1.175V	0X1111	DEF

PCI INTERRUPT/IDSEL MAP								
BACK PANEL	PCI BUS#	DEVICE#	IDSEL PIN	PCI SLOT	PCI SLOT	PCI SLOT	PCI SLOT	REQ/GNT
SLOT				INTA*	INTB*	INTC*	INTD*	
1	01	0X05	22	P_INTY*	P_INTZ*	P_INTW*	P_INTX*	1/1
2	01	0X06	24	P_INTW*	P_INTX*	P_INTY*	P_INTZ*	2/2
3	01	0X07						
4	01	0X08						
5	01	0X09						
6	01	0X0A						

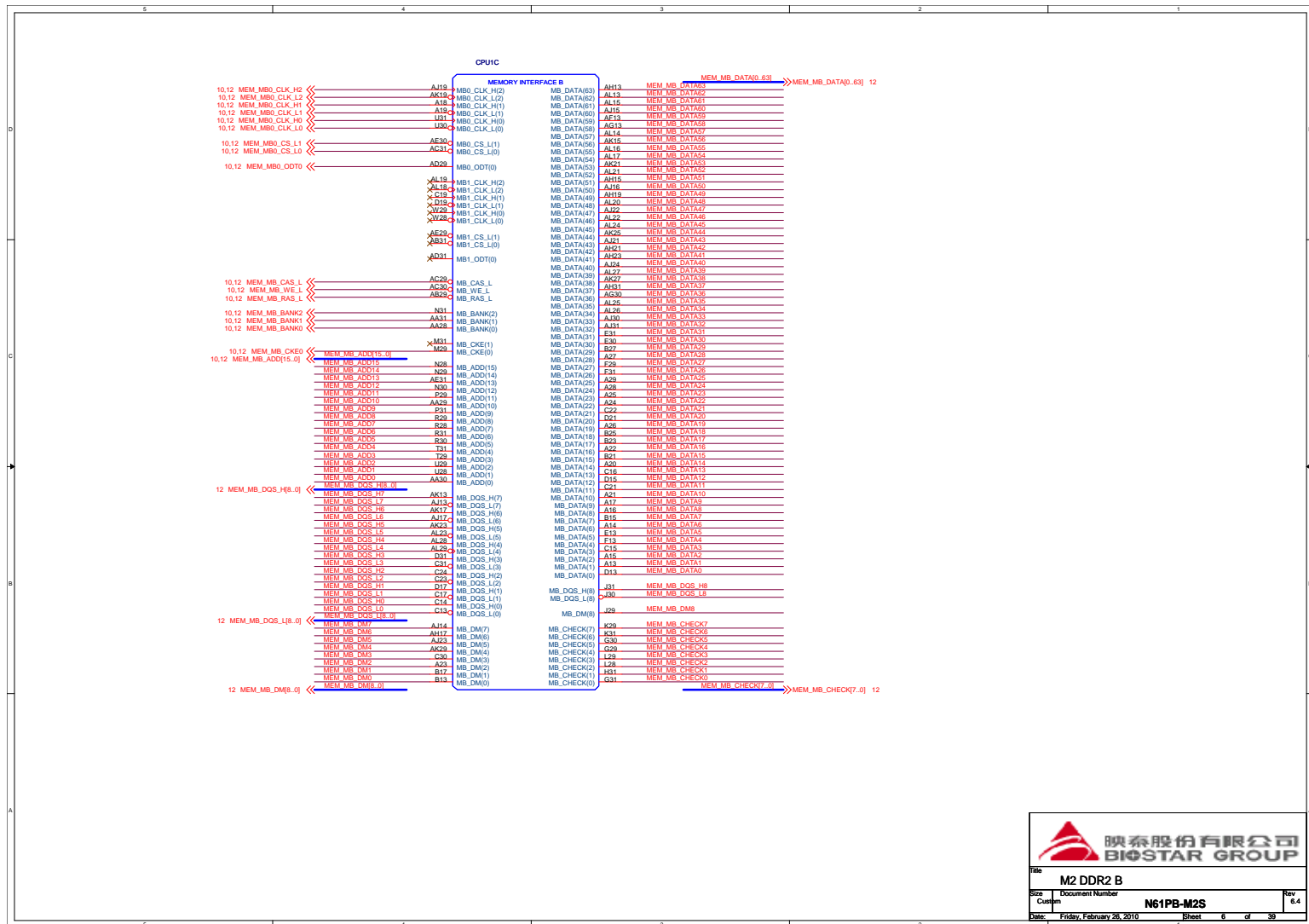
PCI DEVICE MAP				
DEVICE	PCI BUS#	FUNCTION	IDSEL PIN	DEVICE ID
MCP68S	MCP51 LOGICAL PCI BUS 0	0X01-0X0F
MAC/MAC	0	XA	0	0X9057
PCI-PCI BRIDGE	0	X9	0	0X905C
SATA1	0	X8	0	0X9055
SATA0	0	X8	0	0X9054
IDE	0	X6	0	0X9053
MODEM CODEC	0	X4	1	0X9058
AUDIO CODEC	0	X4	0	0X9059
USB 2.0	0	X2	1	0X905B
USB 1.1	0	X2	0	0X905A
SHAPE TRIM	0	X1	2	0X905F
LDT	0	X0	0	0X905E
SMBUS2	0	X1	1	0X9052
LEGACY SLAVE	0	?	?	0X90D3
LPC	0	X1	0	0X905051
LOGICAL PCI BUS	1	?	?	?
PCI SLOT 1				
PCI SLOT 2				
PCI SLOT 3				
PCI SLOT 4				
PCI SLOT 5				

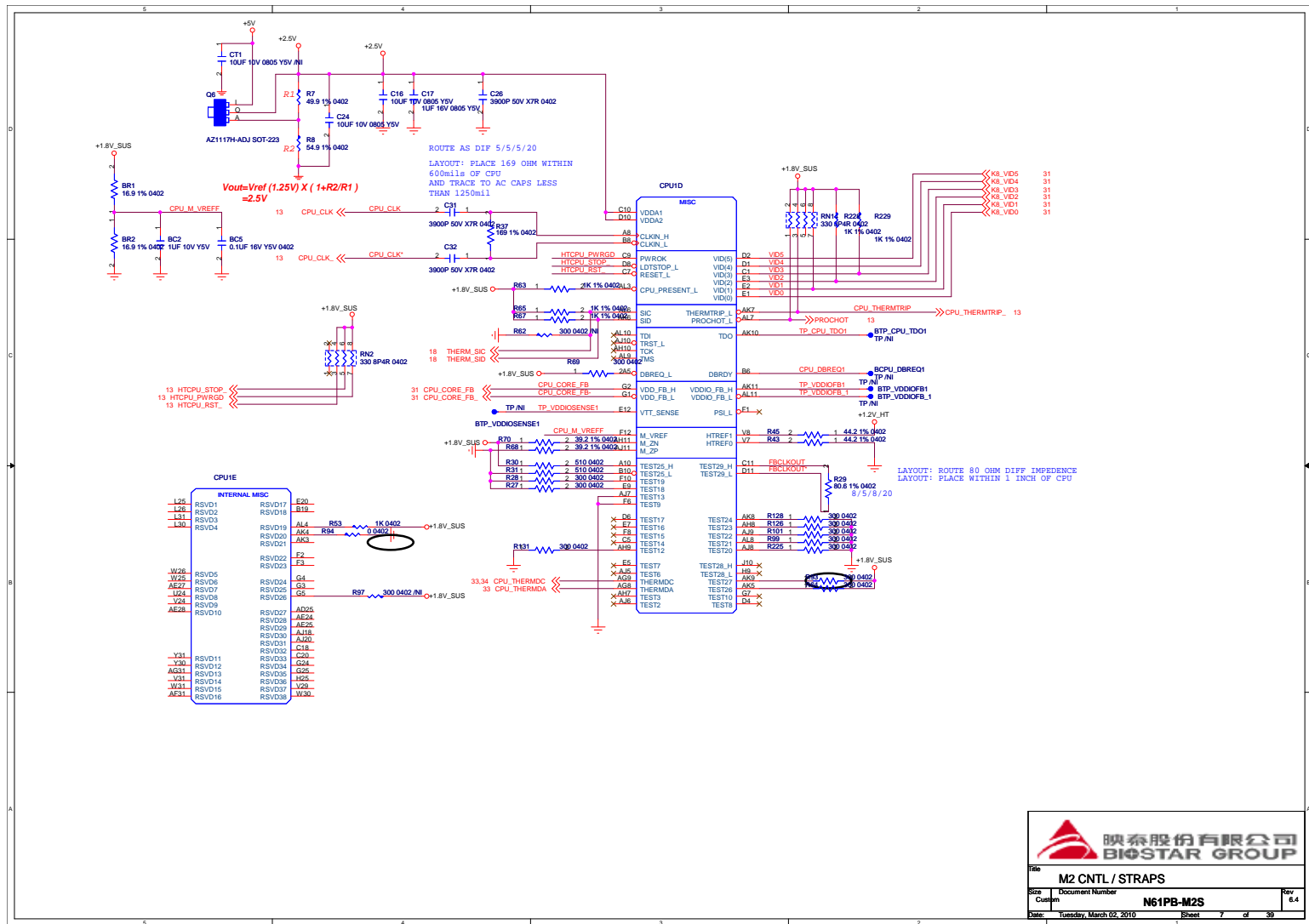
SMBUS ADDRESS MAP		
DEVICE	SMBUS #	ADDRESS
SLOT		
DIMM 0	0	1010 000 = 0X50
DIMM 1	0	1010 001 = 0X51
DIMM 2	0	1010 010 = 0X52
DIMM 3	0	1010 011 = 0X53
SD	1	0101 101 = 0X2D
PCI SLOT 1	1	ARP
PCI SLOT 2	1	ARP
PCI SLOT 3	1	ARP
PCI SLOT 4	1	ARP
DDC BUS A	?	
DDC BUS B	?	

22U25DE	9*7 mm
100U16DE	6.3*11 mm
220U10DE	6.3*11 mm
470U16DE	8*11 mm
1000U10DE	8*14 mm
1500U16DE	10*25 mm
3300U25DE	10*25 mm



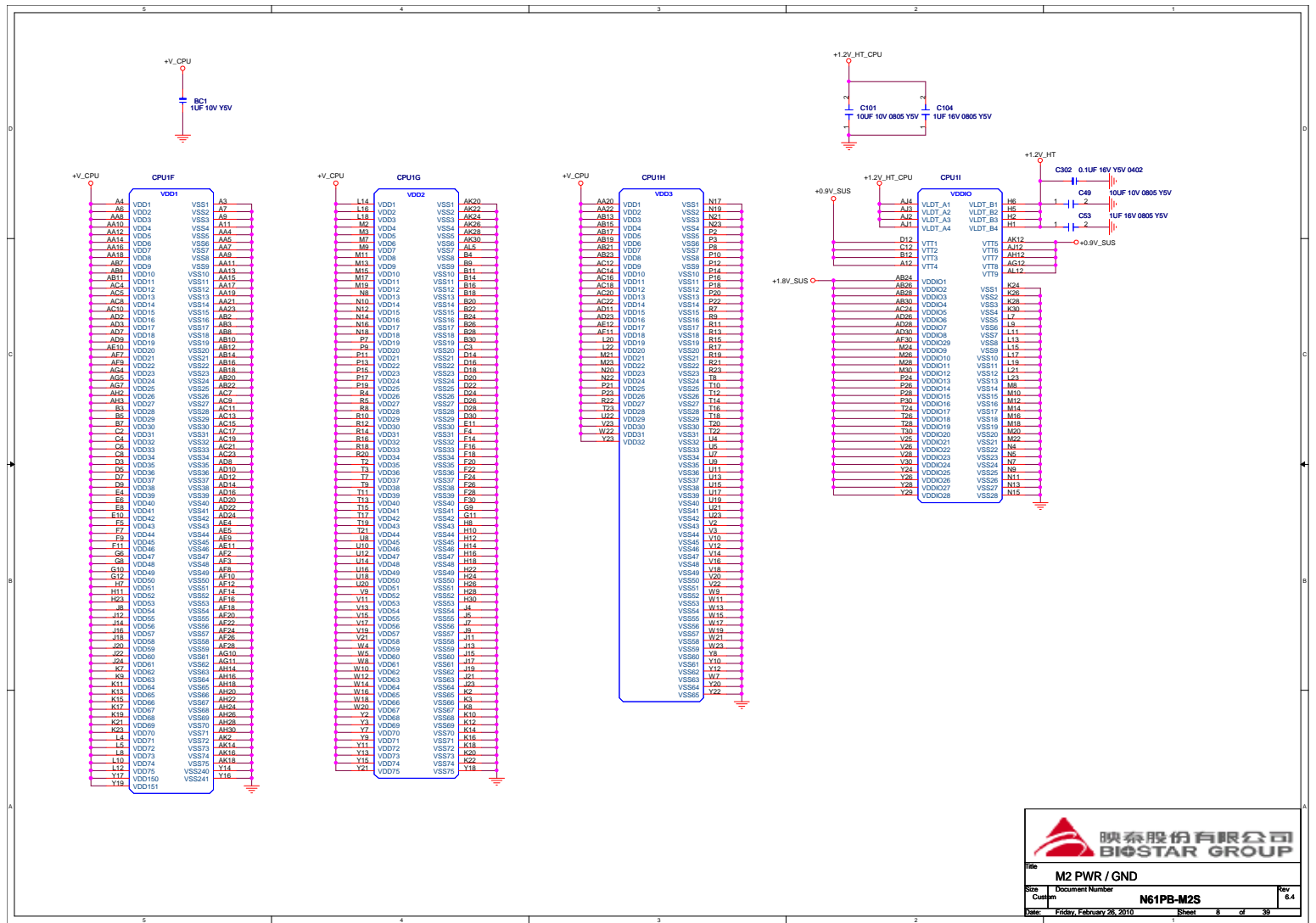
SPEC&CHANGE LIST			
Size	Document Number	Rev	
Change	N61PB-M2S	6.4	
Date	Friday, February 26, 2010	Sheet	4 of 39

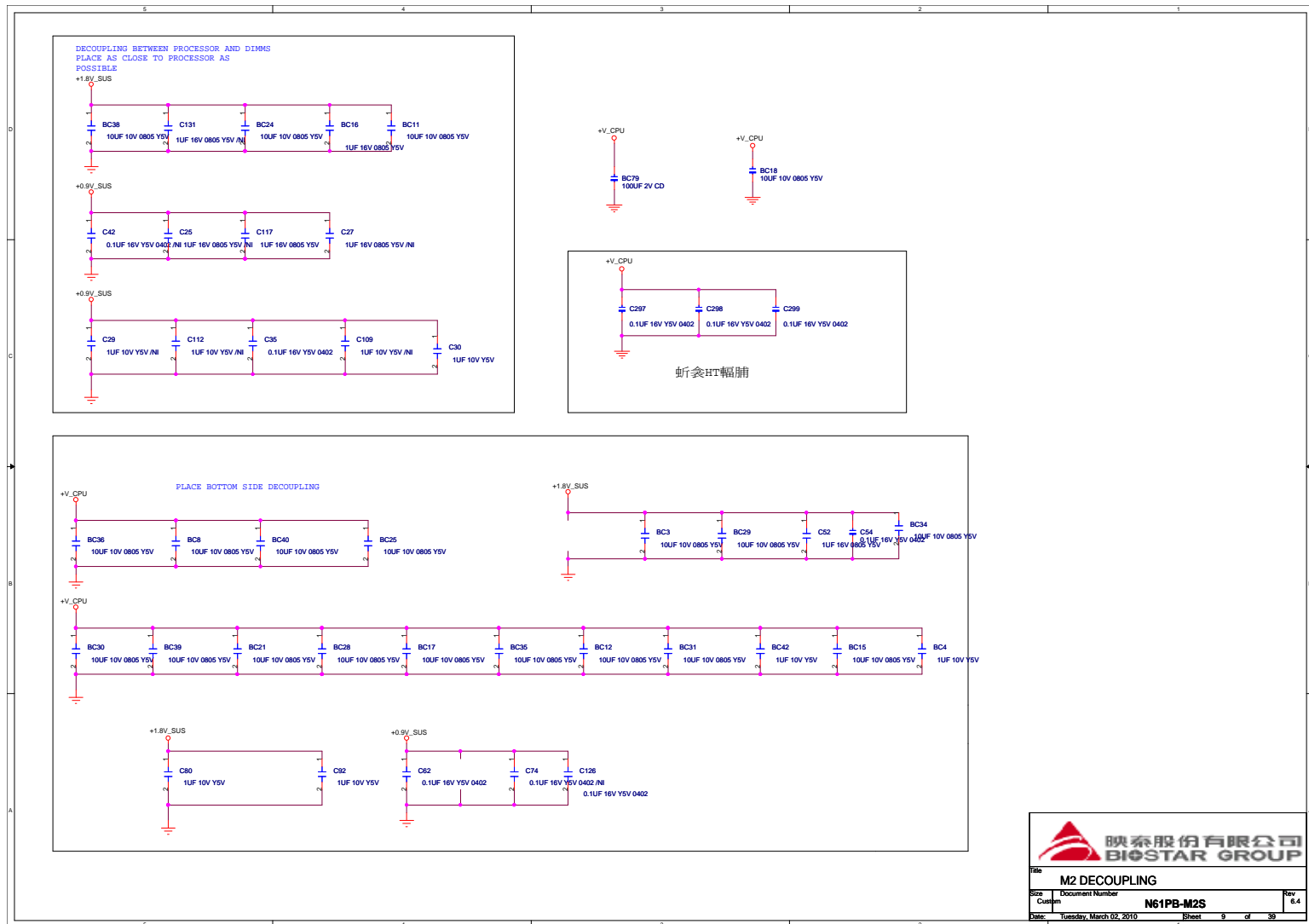


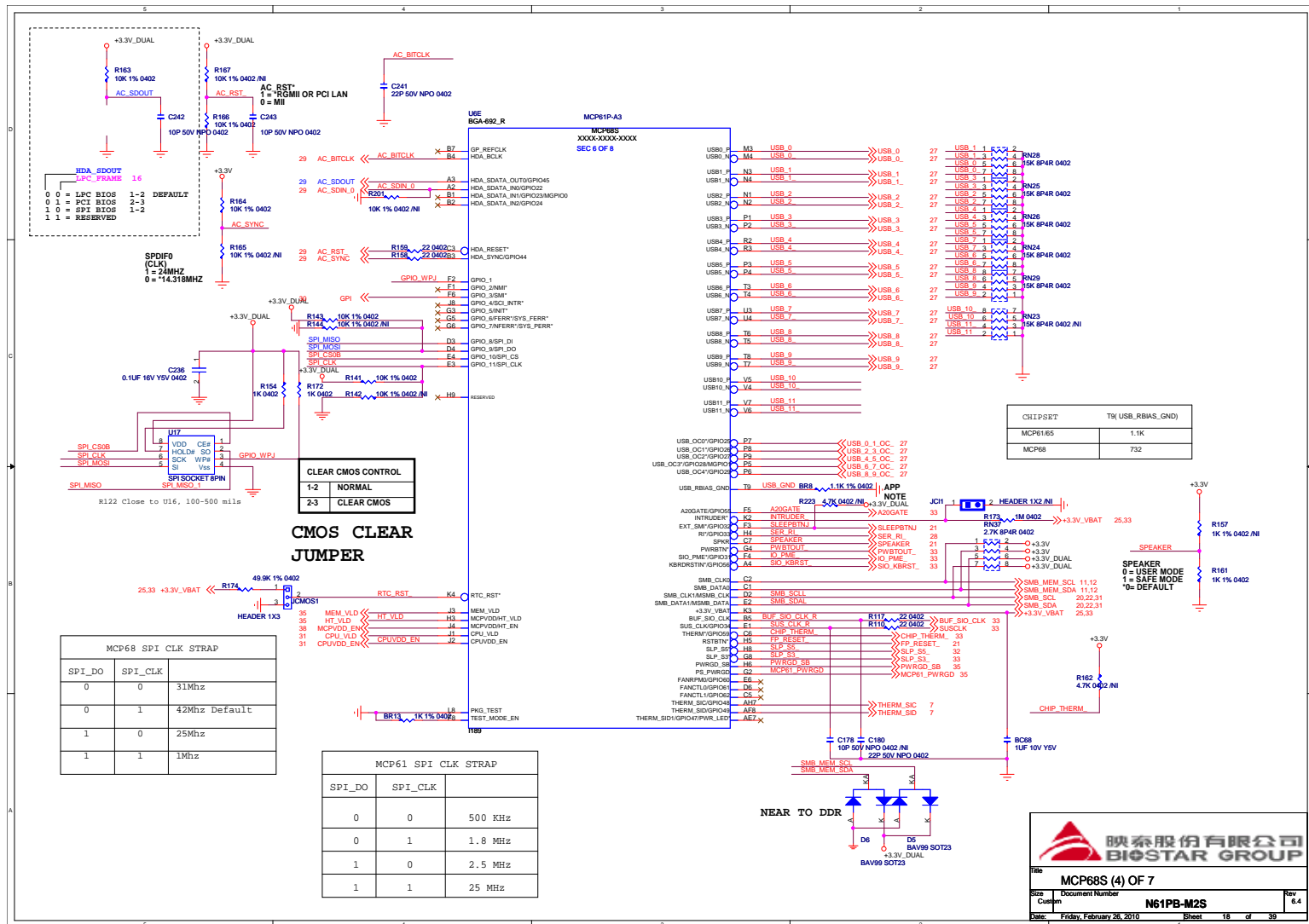


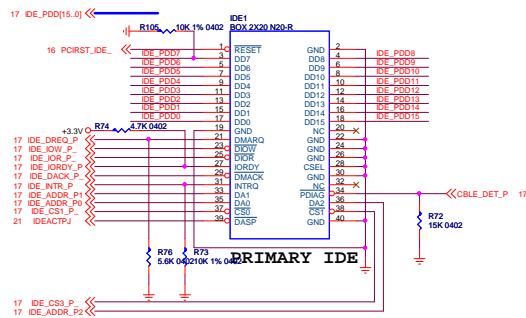

映泰股份有限公司
BIOSTAR GROUP


File		M2 CNTL / STRAPS	
Size	Document Number	N61PB-M2S	
Cur	Version	6.4	
Date	Tuesday, March 02, 2010	Sheet	7 of 39





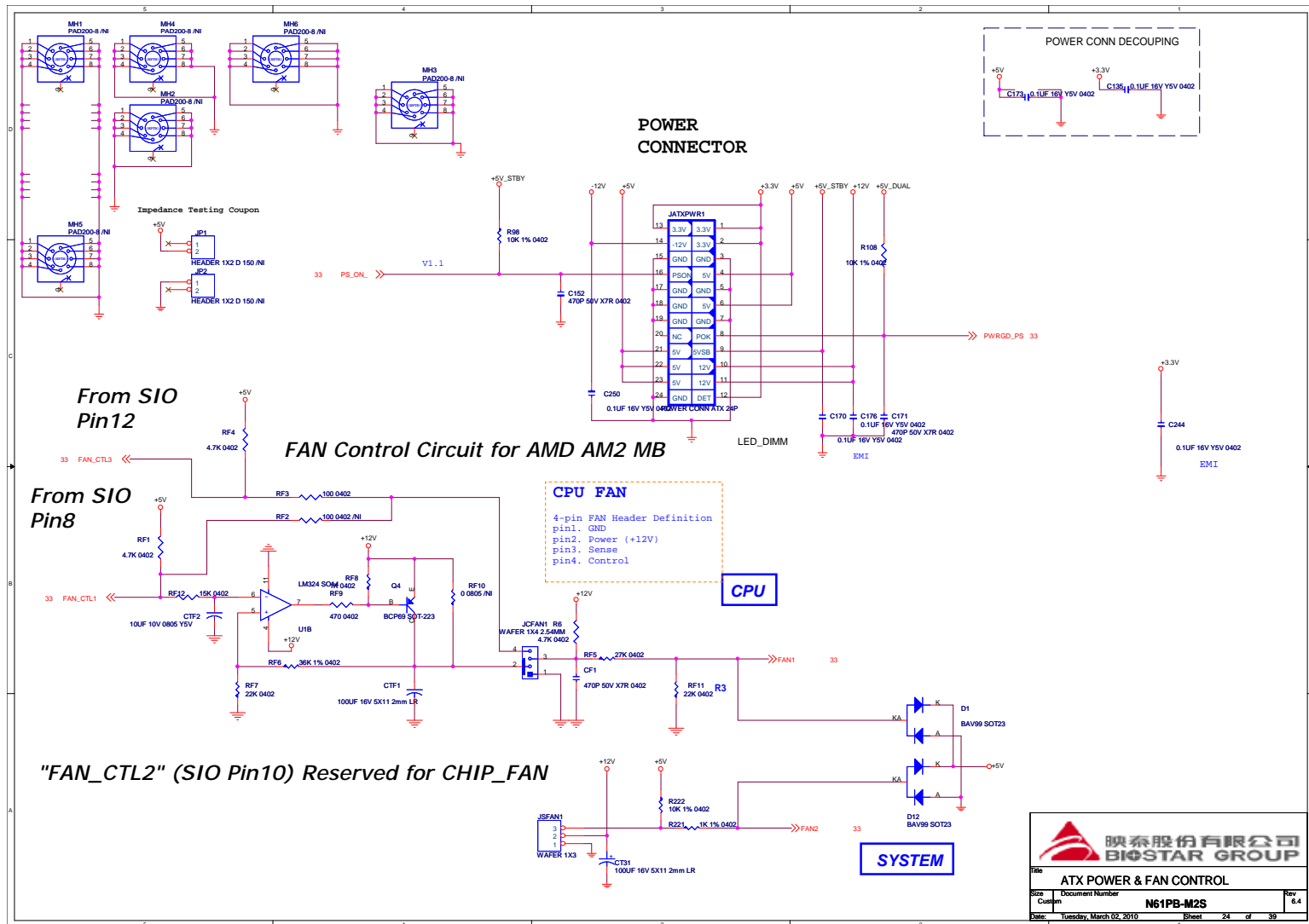


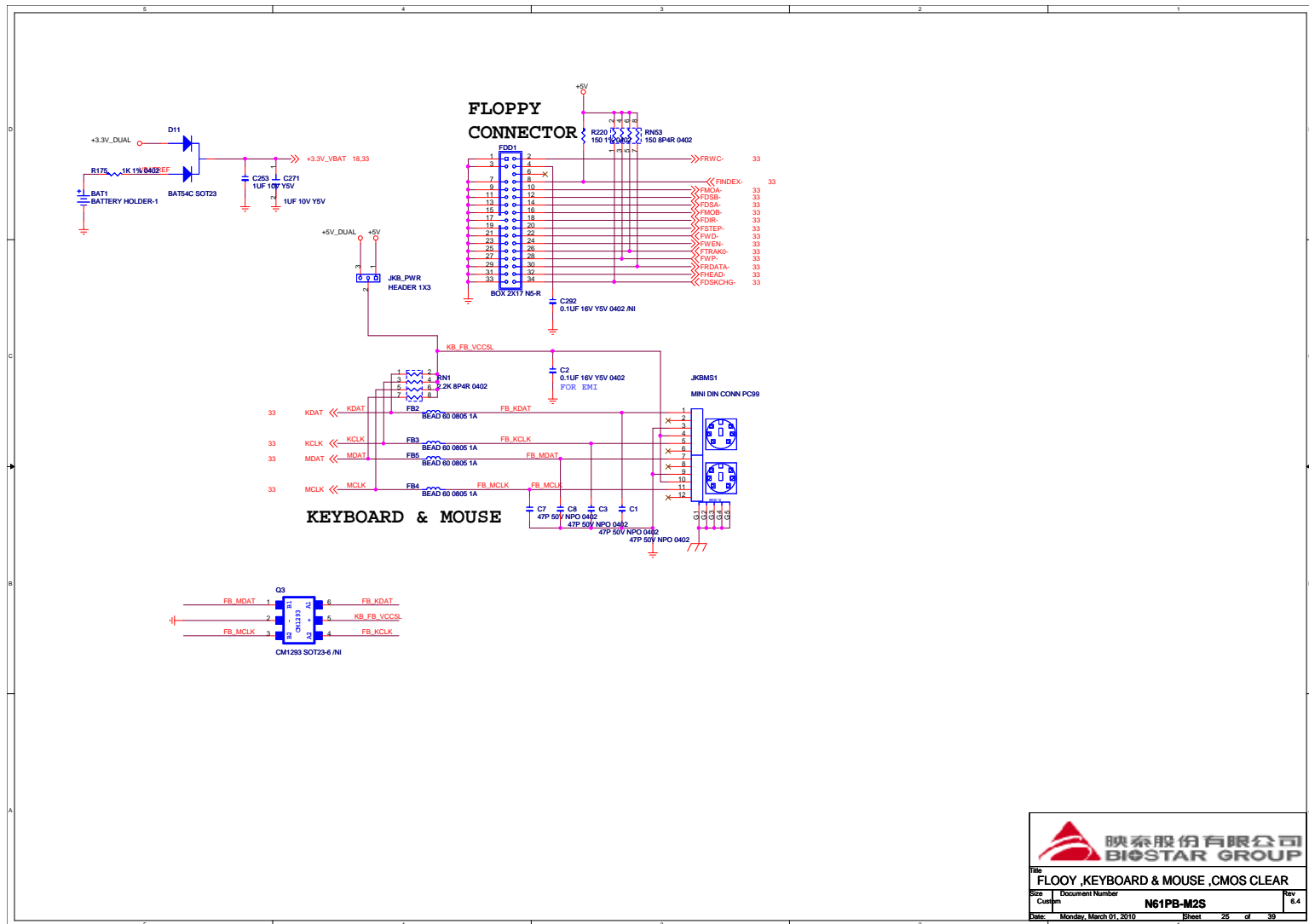




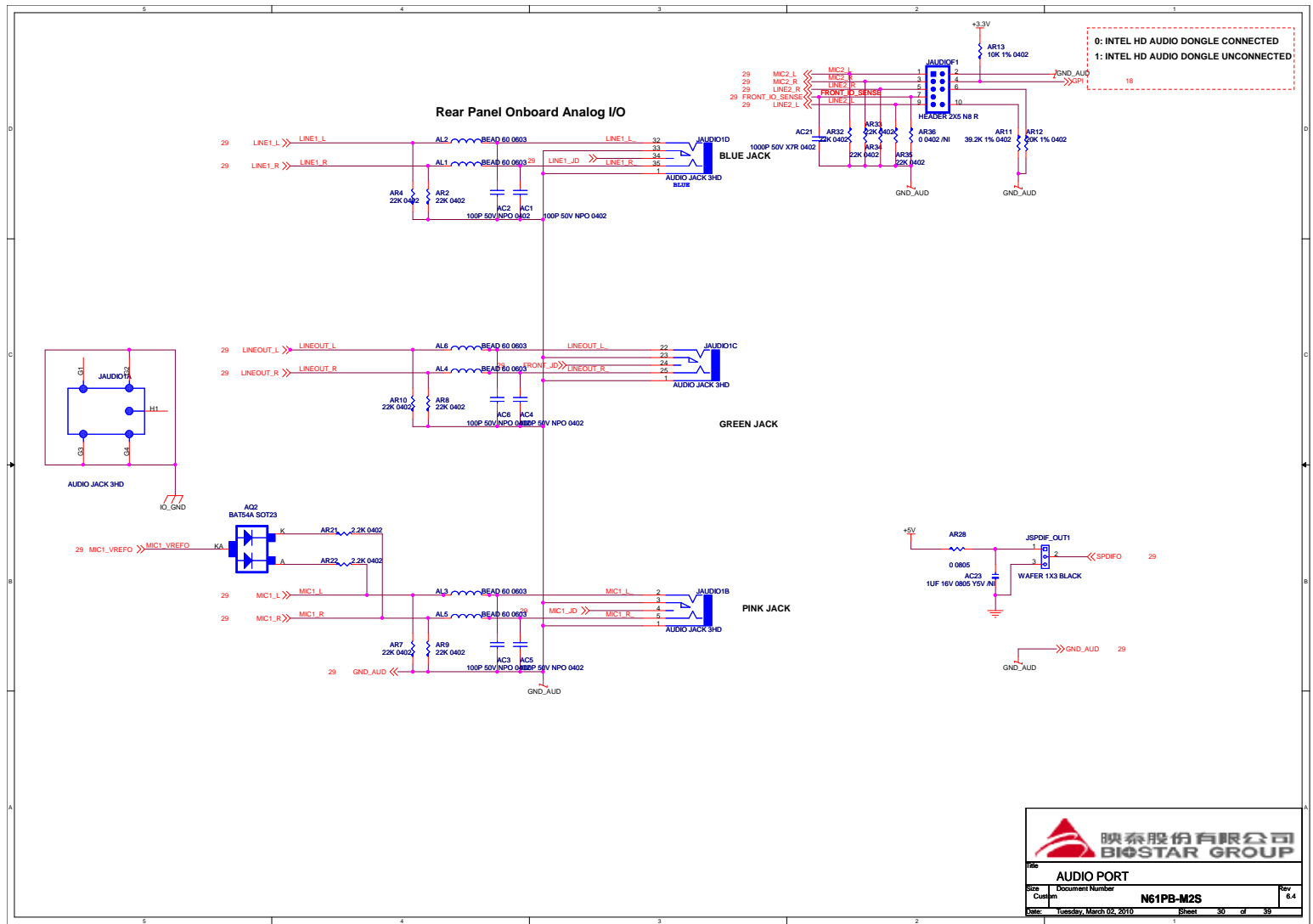
映泰股份有限公司
BIOSSTAR GROUP

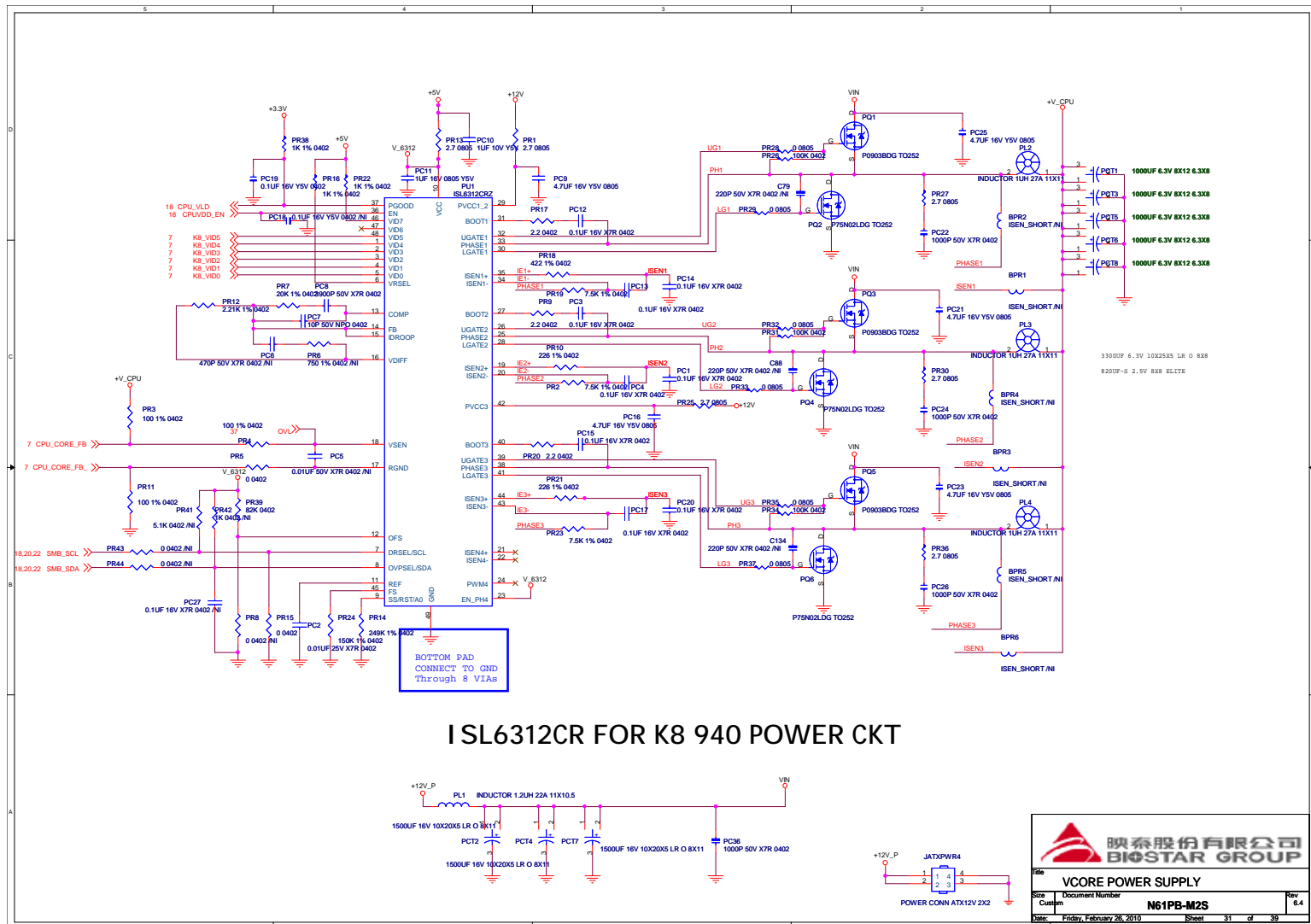
IDE CONNECTORS			
Size	Document Number	N61PB-M2S	Rev. 6.4
Cust.	Date: Friday, February 26, 2010 Sheet 23 of 39		

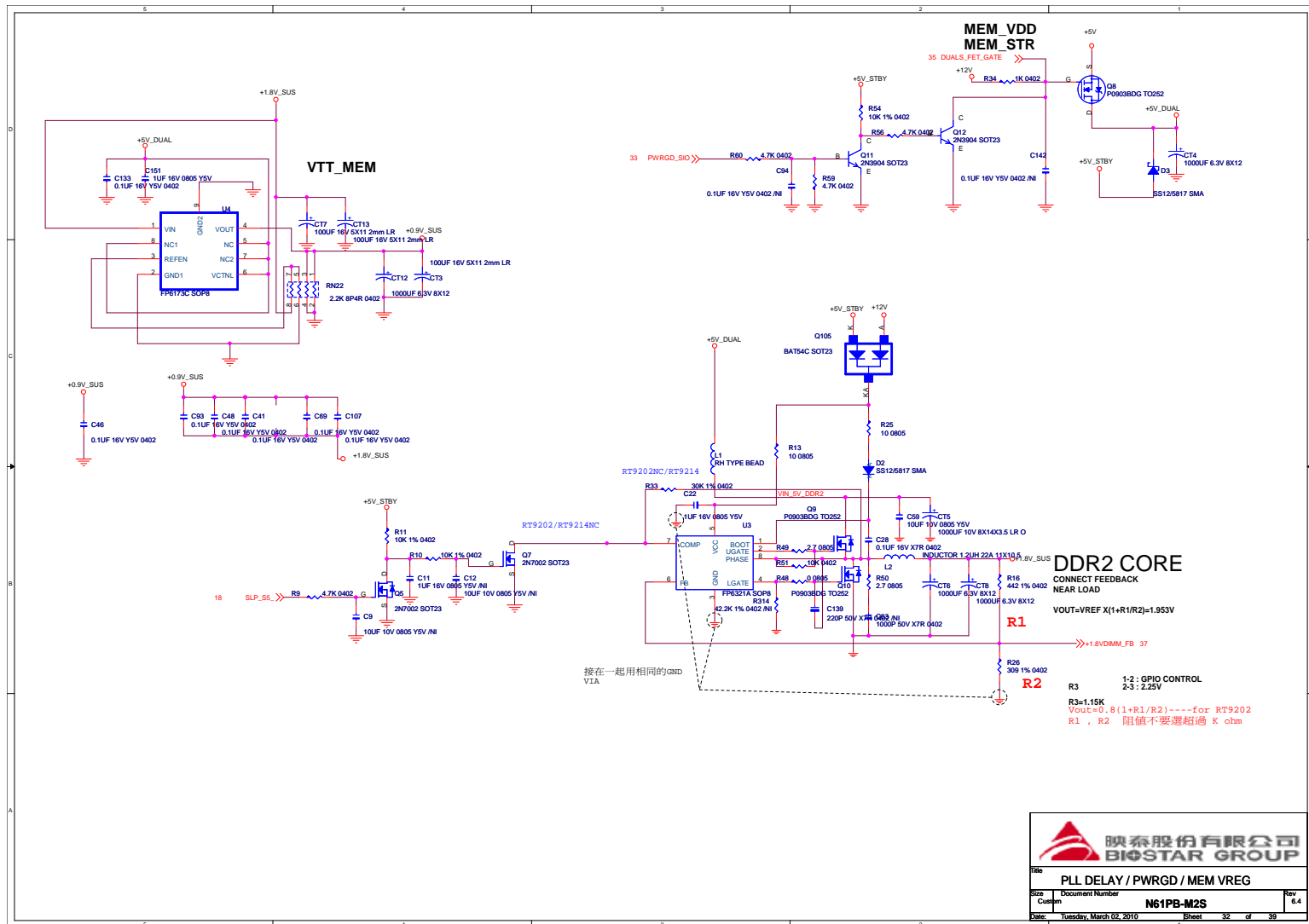




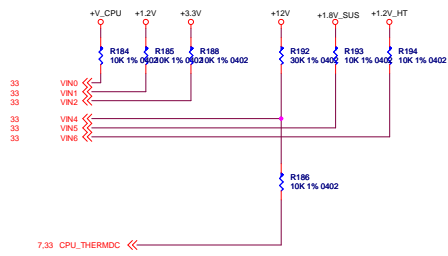






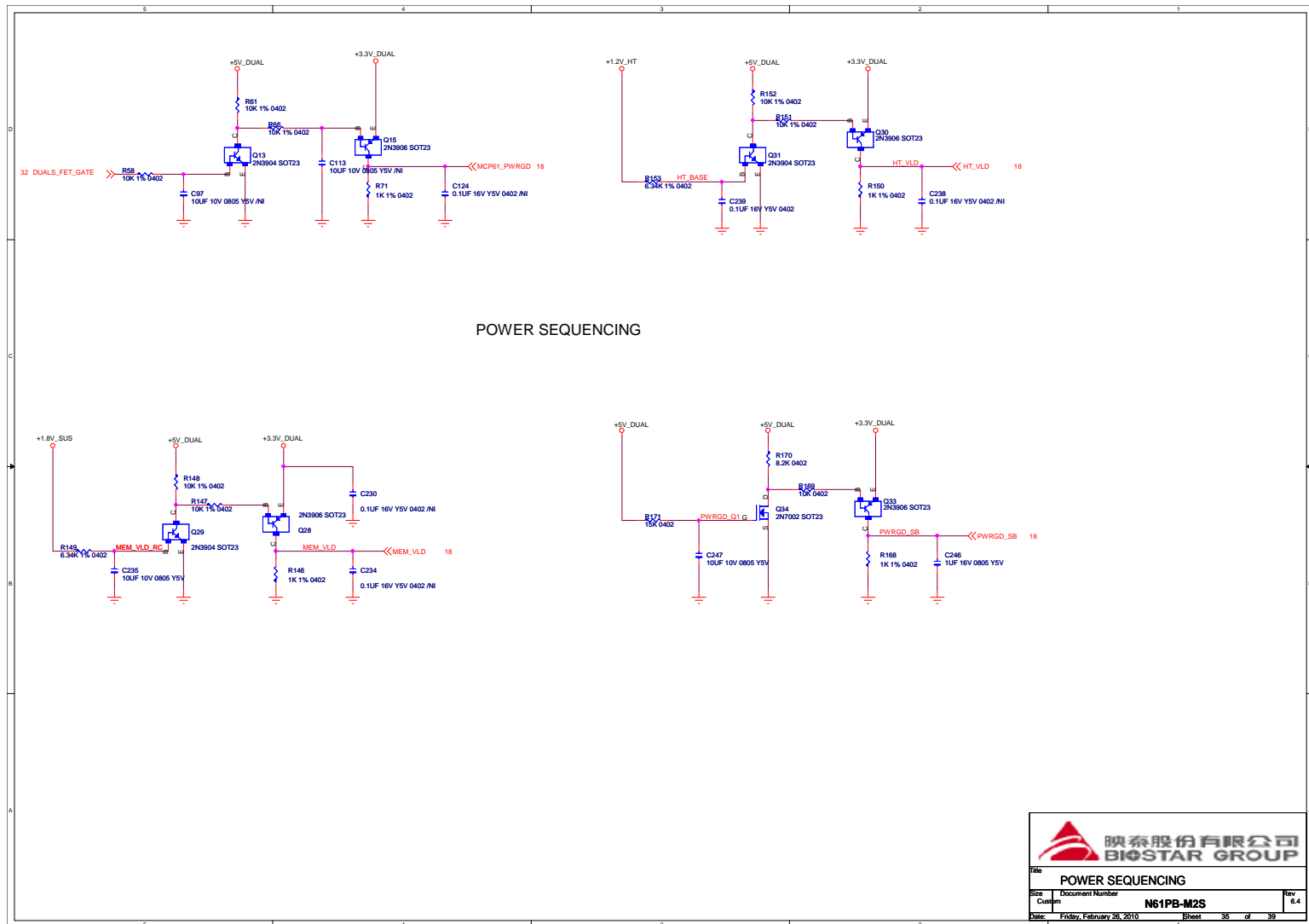



Voltage Sensing

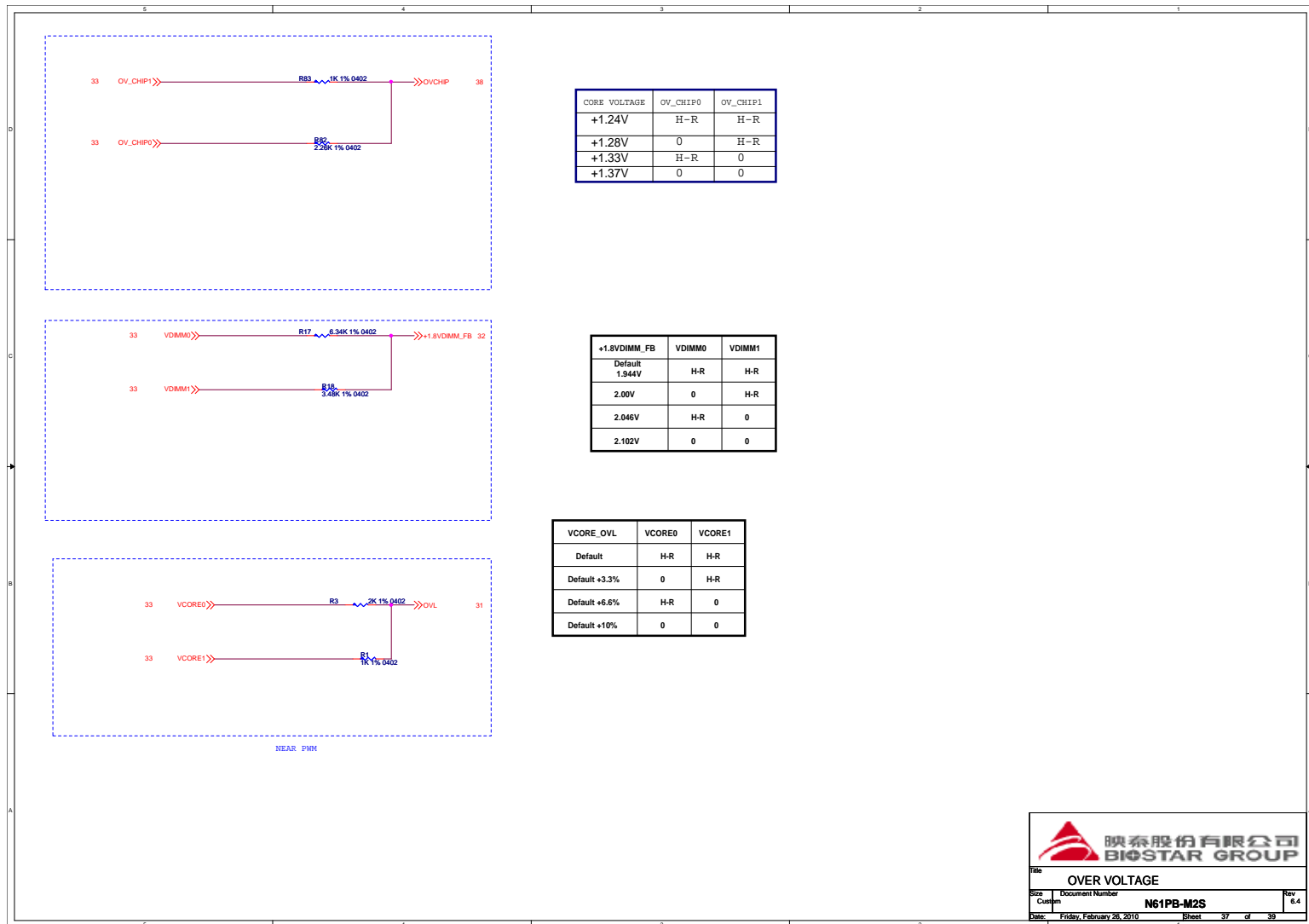



hardware monitor

 映泰股份有限公司 BIOSSTAR GROUP		Rev: 6.4	
File: H/W MON		Rev: 6.4	
Size: Custom	Document Number: N61PB-M2S	Rev: 6.4	
Date: Friday, February 26, 2010	Sheet: 34	of 39	



			
POWER SEQUENCING			
File	Document Number	Rev	
Size	Customer	N61PB-M2S	
Date	Friday, February 26, 2016	Sheet	35 of 39



 映泰股份有限公司
BIOSSTAR GROUP

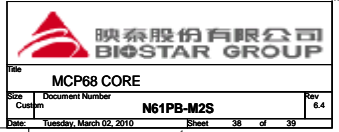
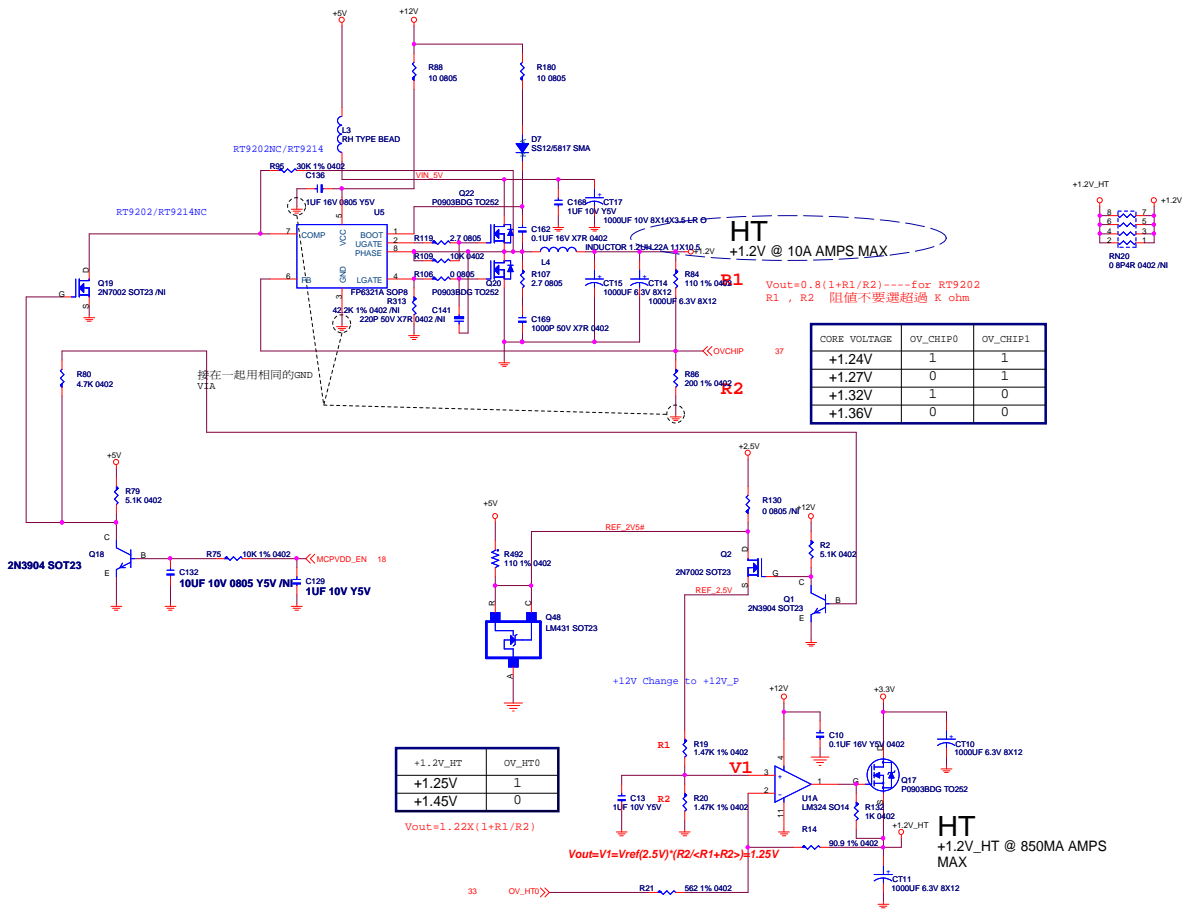
File OVER VOLTAGE

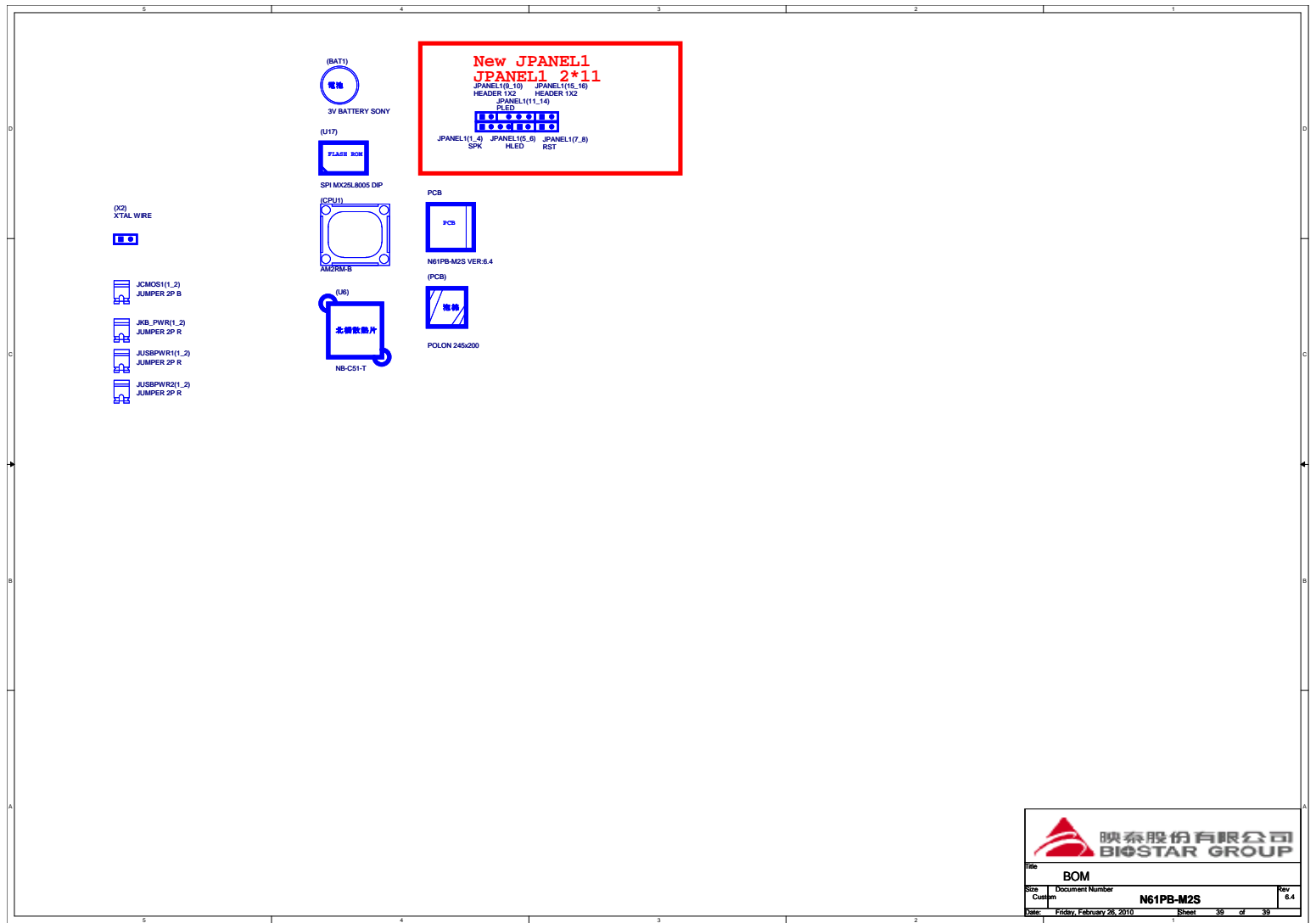
Size 6.4


Document Number N61PB-M2S

Date Friday, February 26, 2010 Sheet 37 of 39

MCP68 CORE







映泰股份有限公司
BIOSSTAR GROUP

File		BOM		
Size	Document Number	N61PB-M2S		Rev. 6.4
Custom	Date	Friday, February 26, 2010	Sheet 39 of 39	

N61PA-M2S-V6.0 蚬唎善N61PB-M2S-V6.0 坪党蚬唎

- 1) Page 7 汪厥AM2+ CPU
嵒樓LIR53 丕R97 丕R131 丕R225 丕R99 丕R101 丕R126 丕R128 丕R228 丕R229
- 2) Page 15 載蚬R/G/B盪腔恒嶺莧郊迥恒嶺莧 腔佼哇
- 3) Page 21 載蚬Power LED 盪嶺
- 4) Page 26 嵒樓VGA ESD 悵誘莧嶺
嵒樓LQ4 丕Q38 丕Q37
- 5) Page 27 嵒樓USB FUSE COLAY莧嶺
嵒樓R226 丕R227
- 6) Page 28 刂盪COM PORT腔嗣紆盪儋奪
刂盪D8
- 7) Page 29 載蚬AUDIO 莧埭莧
蔚CT28 丕 10UF 10V載蚬略4.7UF 16V
- 8) Page 30 載蚬SPDIF 莧埭莧
蔚AC23 NI
- 9) Page 31 COLAY CPU IN/OUTPUT 莧 8X10
單遙PR11迥PR5腔佼哇
蔚PWM腔SM BUS腔揸莧莧郊NI 丕撈NI PR43 丕PR44
- 10) Page 32 載蚬DDR 1.8V莧嶺 丕蔚窠煦略 5V-DUAL 坪蚬名揭蚬略5V-STBY 丕淺汙莧埭略名恆彬
載蚬ISEN莧郊 丕撈載蚬R33 丕丕20K載蚬略30K
載蚬莧郊R34 丕丕4.7K載蚬略1K
- 11) Page 38 載蚬CORE 莧抑莧嶺腔ISEN莧郊 丕撈載蚬R95 丕丕20K載蚬略30K
- 12) Page 39 載蚬USB 汶窠腔蘇 莧抑
蔚埭僅腔蘇 2 丕3PIN 蚬略珣斐蘇 腔1 丕2PIN
載蚬BIOS ROM 丕丕4M 蚬略8M

N61PB-M2S-V6.0 蚬唎善N61PB-M2S-V6.1 坪党蚬唎

- 1) Page 30 AUDIO嵒樓ESD悵誘
嵒樓LILQ27 丕LQ31 丕D14 丕D15
- 2) Page 36 嵒樓ESD悵誘莧嶺
嵒樓LQ30

2009/01/05 党蚬唎
蔚PR24 丕埭僅腔100K曹略121K 丕蔥腴CPU PWM 臺

 映泰股份有限公司 BIOSTAR GROUP			
File CHANGELIST			
Size	Document Number		Rev
Copies	N61PB-M2S		6.4
Date	Friday, February 26, 2010		Sheet 40 of 40